



**more speed, more life, less cost.**

# Prefix

DQ Overview

Meet the Team

## Products:

- Diamond Coredrills
- Diamond Blades
- Wire
- Accessories

## Services:

- Re-tipping
- Pulley re-rubbering
- Get in touch - Contact Info

Pg.

3

4

5-7

8-9

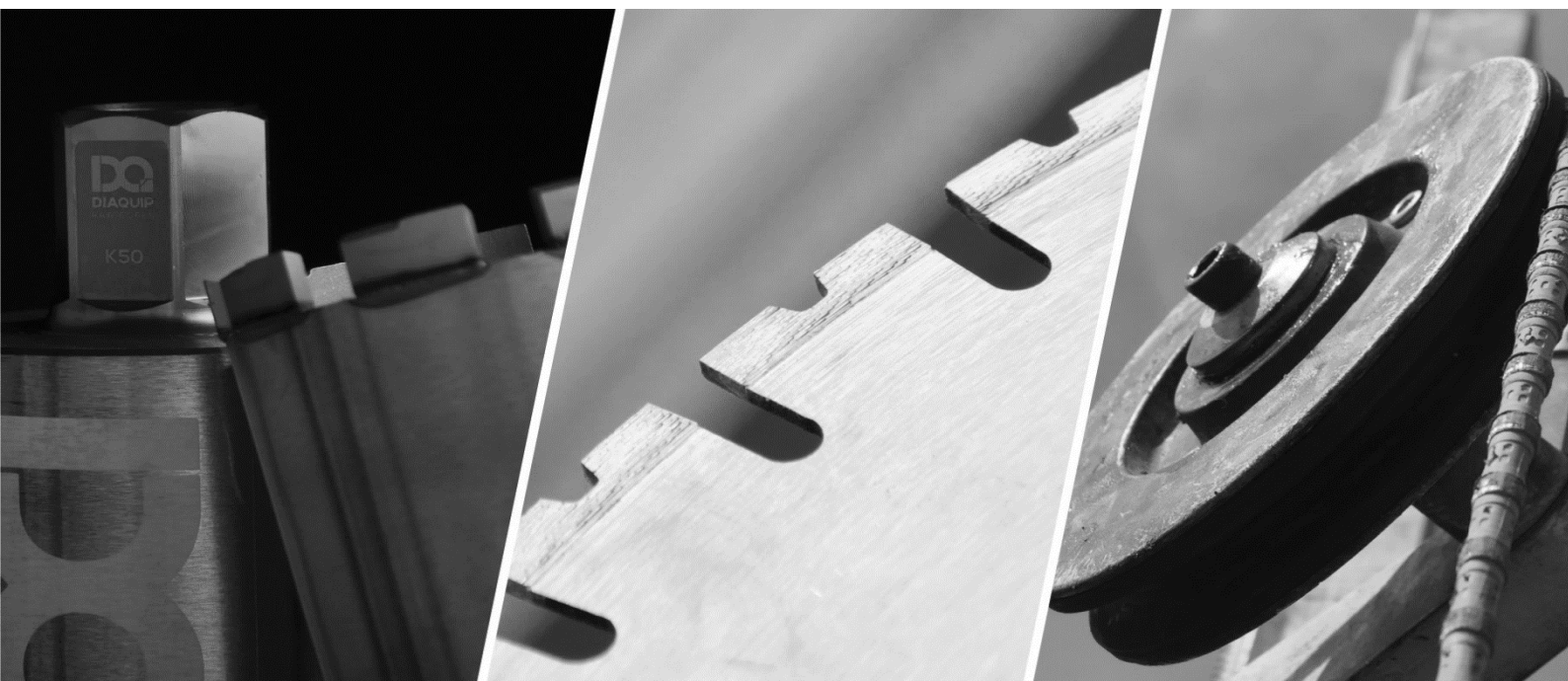
10

11

12

12

13





# DQ Overview

Supported by over 20 years' experience, Diaquip is a progressive leader in the Diamond Cutting Products Market and the chosen provider of the world's leading technologies, through a reliable and friendly customer service culture.

**Our Vision** is to be the only advanced CNC laser welding Manufacturer of high-quality Diamond Coredrills in the UK, with massive stocks of every conceivable size and specification available, delivered to you anywhere from our Manchester and London branches as fast or faster than you need it!

## Research & Development

Our focus has been fuelled through the use of our onsite R&D testing facility. We spend hundreds of man hours in planning, developing, testing and improving our products – comparing them all to our current and future innovations, as well as to others in the market.

Diaquip has a fully equipped test area dedicated to its R&D. It contains a 50N steel reinforced flint concrete bed, along with limestone, river gravel and other aggregates in the form of concrete slabs, steps & pipes. With this range of applications available at our fingertips, Diaquip is able to ensure accurate testing in a wide range of conditions.

We also pride ourselves in conducting regular strength and break tests on all our products to prove they maintain quality, longevity and reliability at all times.



# Meet the DQ Technical Team

Our Sales Manager, Harvey, and his team are always on hand to provide the advice or product that you require. If you're needing a quick personal service, just get in touch and one of our team would be glad to look after you and your needs from there.



**Harvey Beech**  
Commercial Manager  
+44 (0) 7881 357056  
harvey@diaquip.co.uk



**Gerry Ansbro**  
Diamond Product Specialist  
& Technical Support  
+44 (0) 7848 454122  
gerry@diaquip.co.uk



**Andy Johnson**  
Diamond Product Specialist  
& Technical Support  
+44 (0) 7848 458622  
andy@diaquip.co.uk



**Michael Thomas**  
Diamond Product Specialist  
& Technical Support  
+44 (0) 7384 236785  
michael@diaquip.co.uk



# DIAMOND COREDRILLS

## CROWN COREDRILLS

Our crown coredrill specifications *Aero* and *Z* relate directly to our range of segmented coredrills. With their individual strengths, you can select the one most suited to your job; whether that be speed, universality or life.

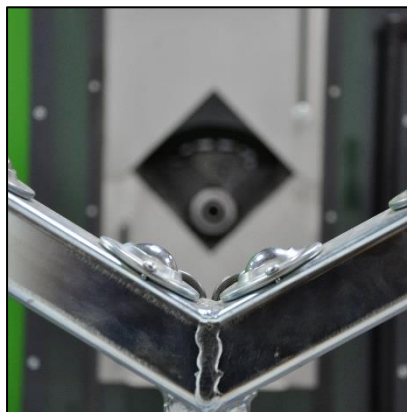
## COREDRILLS – RAW CORES™

**RAW CORES™** is just the latest in line of innovative products that Diaquip has brought to the market, offering no cheap thrills and pretty paint work, but giving you everything you need from a coredrill and nothing you don't.



## LASER WELD MACHINE

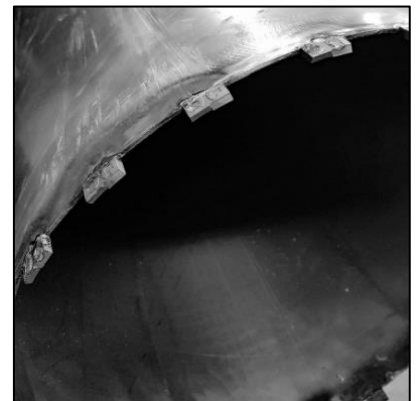
Introducing our fully automated, 3 axis CNC controlled laser welding machine; the only one of its kind in the UK. The strength of the Weld exceeds the market norm in ensuring bond integrity, and flawless segment positioning every time. Capable of producing complete cores in under 60 seconds that range from 12mm crowns up to 300mm segmented cores, this machine ensures supreme quality that can be accessed in a variety of specifications.



## THE CORE SIZE RANGE

Developed over many years according to market requirements and changes, our segmented coredrills are right at the cutting edge. Available in many standard diameters from 46mmØ up to 1200mmØ, are manufactured to standard and custom lengths up to 2000mmWL from stock tube to 1¼" UNC connection. Lengths up to as much as 4000mmWL (though not stocked) have been processed easily through our production facility – this agility and resource enabling us to cater well for any job we're given.

All segment specifications are put through a rigorous R&D process before welcomed into the DQ core family; being drilled with several machines, into different aggregates, in varying working conditions to ensure they meet our criteria of speed, life and efficiency.



## THE CORE SPECIFICATIONS

From the *DQ* segment made with the most expensive synthetic diamond in the world, to the *ZI* segment drilling through virtually any reinforced concrete with being made using a diamond 'cluster', each spec is incredible quality in its own field. The Matrix on the following page explains exactly where each segment excels in the industry.



SPEC	D5	DQ	Zpro	AeroF	AeroFW	AeroFW Max	Aero F+	K50	Z1
DESCRIPTION	<p>A rooftop design and was originally developed for a good speed/ life ratio for the US market, but it has been popular elsewhere in the world since. Best for mid to low power motors.</p>	<p>A twisted rooftop design, developed with new technology from feedback to create a new, best all-rounder. Extremely popular for flint in the London market.</p>	<p>Similar to AeroF, better for higher powered machines (e.g trailer rigs)</p>	<p>Amongst a large range of other materials, the Aero F is tailored to deliver on speed in Quartz, River Gravel and Flint.</p>	<p>The uniquely designed 'W' shape of this segment makes the segment extremely aggressive and fast cutting for wet or dry hand drilling.</p>	<p>Due to this coredrill being a continuous rim of Aero FW segments, it is excellent for use in heavy rebar situations as it has a reduced risk of snagging and longer life. e.g where brick ties are present</p>	<p>With its high diamond concentration the AERO F+ is designed specifically for effective cutting with good life in Asphalt and other abrasive materials.</p>	<p>Fast cutting on a very wide variety of aggregates with low to medium power machines. This segment can also be used for dry cutting.</p>	<p>With exceptional results around the UK in reinforced concrete, this segment is known for its outstanding speed.</p>
USP	FAST IN STEEL	HIGHEST QUALITY	GREAT IN ASPHALT AND FOR HIGH POWER MACHINES IN CONCRETE	DURABLE IN CONCRETE	SPEED FOR DRY CUTTING	REDUCED RISK OF SNAGGING	EXTRA LONG LIFE, GREAT IN ASPHALT	MULTI-PURPOSE, CAN BE USED FOR DRY CUTTING	EXCEPTIONAL SPEED
	D RANGE - MADE WITH A COMPLETELY UNIQUE DIAMOND, HIGHEST QUALITY AND MOST EXPENSIVE SYNTHETIC DIAMOND IN THE WORLD			F RANGE - EXTREMELY STRONG ADHESION TO STEEL DUE TO HIGH COBALT PERCENTAGE					
	*Long Life	•	•	•		•	•		
*Fast Cutting	•	•	•		•	•		•	•
Dry cutting					•			•	•

\*All relative as per average results, for guidance only

\*\*All specifications are approved for reinforced concrete as a standard requirement.

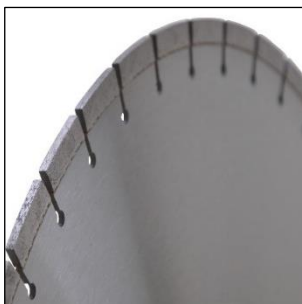


# DIAMOND BLADES

Along with blades stocked in over 4 standard specifications and 8 special types up to 1200mmØ, Diaquip is unique in being able to offer large bespoke blade manufacturing services from one of the only fully-automatic brazing machines in the UK; making and re-tipping blades up to 2200mmØ.

## THE BLADE SPECIFICATIONS

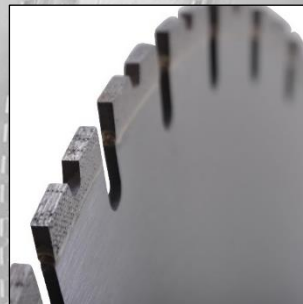
- **Floorsaw Blades** - The High Power Premium TRIMEX as the ultimate in position diamond technology provides for a consistent presence of sharp diamond. The Low Power Pro TX is made using traditional random diamond positioning, and can be relied upon to give great speed and life.
- **Wallsaw Blades** - The Premium TRIMEX's cutting edge diamond positioning provides consistent presence of sharp diamond.
- **Looping Blades** - The Premium TX uses traditional random diamond positioning; and is proven on all aggregates in the UK.



**Floorsaw  
TRIMEX**



**TX**



**Wallsaw  
TRIMEX**



**Looping  
TX**



- **Handsaw Blades** - The Pro MATRIX blades utilise Trimex diamond array technology – meaning consistent presence of sharp diamond. The Matrix Ringsaw Blade is complete with rollers of varying grooves.



# DIAMOND WIRE

- **DQ5 Concrete Cutting**

Made with  technology

An absolute winner; made using FusionTech technology. Its manufacturing includes the optimisation of speed and life, but the rest remains a secret!



- **DQ1 Steel Cutting** - Electroplated 48bpm; after vast experience in the decommissioning industry, on and offshore, the DQ1 leads on pure steel or very highly reinforced concrete cutting.





# ACCESSORIES

We like to provide ranging durable accessories to help get the job done, and tailor our products specifically to your requirements. These include Fixings such as a M12 Holding Down Assembly and Shield, Bolt & Anchor Fixings, as well as Wire sawing accessories such as a Hydraulic Press, Pin Punch and Straight & Swivel Wire Connectors. All are of varying sizes to suit our differing product specifications.



# DQ SERVICES

## RE-TIPPING



Diaquip offers a re-tipping service, which eliminates the need for you to purchase a whole new core barrel, whilst giving you fresh new segments. With a weld that's as good as new; it cuts your cost as well as concrete!

## PULLEY RE-RUBBERING

We can re-rubber pulley wheels (Plunge/Guide/Return & Drive Pulleys) on Hilti, Diacom and Hydrostress Wire saws (200mmØ, 280mmØ and 360mmØ sized pulley wheels).

The service includes free collection of your old pulley wheel, removing the rubber, replacing with Continental rubber and then grooving the new rubber before sending it back to you looking like new and ready for action!

Diaquip's Wire saw pulley wheel re-rubbing service can deliver up to a 50% saving on what is commonly accepted as the highest wearing machine part in wire sawing, as well as embrace the benefits of recycling the old pulley wheel.





# Get in Touch

## London

Unit 9,  
Park Corner Road,  
Betsham,  
Kent,  
DA13 9LJ

+44 (0) 207 781 8221  
[london.sales@diaquip.co.uk](mailto:london.sales@diaquip.co.uk)



## Manchester

Unit 1 Whitefield Road Industrial  
Estate,  
Bredbury,  
Stockport,  
SK6 2QR

+ 44 (0) 161 406 0609  
[sales@diaquip.co.uk](mailto:sales@diaquip.co.uk)





[sales@diaquip.co.uk](mailto:sales@diaquip.co.uk)  
0161 406 0609

