

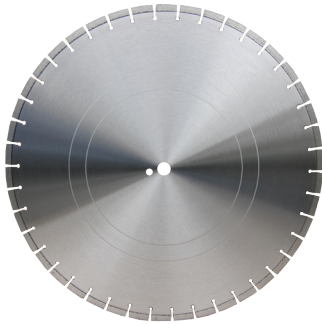
## DIAMOND BLADES

### TRIMEX 1020 FLOORSAW BLADE

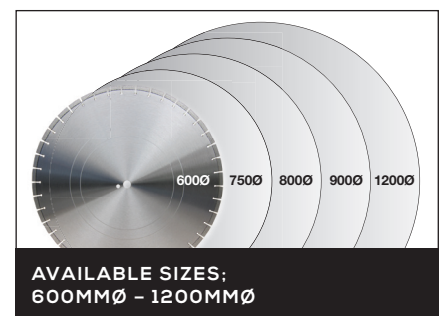
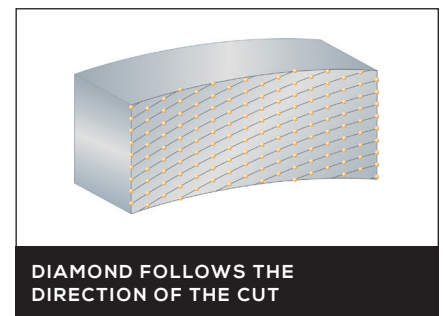
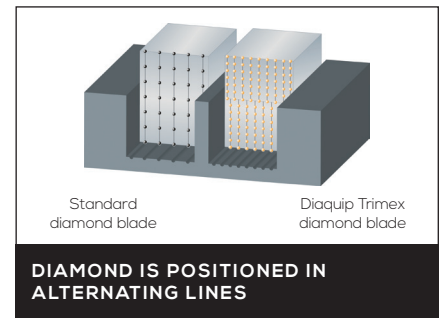
Trimex 1020 is a professional diamond floorsaw blade, to be used on mid to high HP saws. The Trimex 1020 diamond blade has laser welded, uniquely positioned diamond which delivers on speed, longer life, maximised performance and consistency of cut due to the constant presence of sharp diamond on the surface of the segment.

Available in sizes from 600mmØ up to 1200mmØ

# SPECIFICATION DETAILS



- **More speed;** Due to there being a constant presence of diamond on the surface of the segment, the segment consistently cuts at maximum speed
- **More life;** The Diamond position makes full use of every diamond, maximising the life of the segment
- **Smoother cut;** With no gaps between the diamond as with conventional positioned diamond segment, and manufactured using Fusion Tech Technology, the Diaquip Trimex cuts smoothly throughout the life of the segment.
- **Cuts better through steel;** Due to the placement of diamonds, there is always as much sharp diamond on the surface of the segment as possible.



TECHNICAL SPECIFICATION	
Product Description	Professional diamond blade
Application	Universal use on mid to high HP saws
Segment Dimensions	12mm x 40mm
Bore Size	25.4mmØ
Wet/Dry	Wet
Diameter Range	600mmØ - 1200mmØ
RPM	600mmØ;2050RPM/ 750mmØ;1650RPM/ 800mmØ;1550RPM/900mmØ; 1350RPM/1000mmØ; 1250RPM/1200mmØ; 1050RPM/1500mmØ; 805RPM

	Trimex 1000	Trimex 1010	Trimex 1020	Trimex 1030	Trimex 1040
Wallsaw Blade	•				
Floorsaw Blade		•	•	•	•
High Power Electric 3 Phase Floorsaws		•			
Mid-Power Horse Power Floorsaws			•		
High-Power Horse Power Floorsaws			•	•	•
High Speed	•	•	•	•	
Long Life	•		•		•
Cutting in General Reinforced Concrete	•	•	•	•	•
Cutting in Flint				•	•

