

## DIAMOND COREDRILLS

### DIAQUIP K70

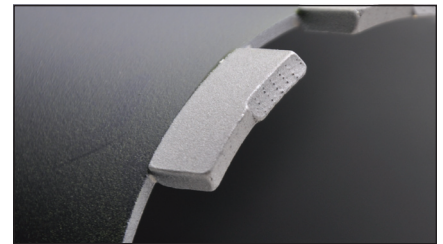
The K70 coredrill is our long life specification in the K Range with outstanding results in demanding circumstances and large amounts of reinforcement.

With very high diamond concentration in the segment and the twisted rooftop design, the K70 is particularly effective in abrasive materials, or **high power motors and trailer rigs**.

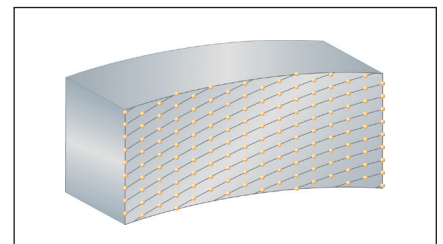
# SPECIFICATION DETAILS



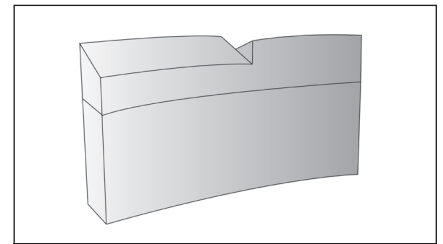
- Twisted rooftop design segment makes starting the cut faster and easier
- Ideal for high power motors and trailer rigs
- Long life in a wide range of aggregates, particularly where there is a high volume of reinforced concrete



**DIAMOND POSITIONED  
IN ALTERNATING LINES**



**DIAMOND FOLLOWS THE  
DIRECTION OF THE CUT**



**TWISTED ROOFTOP**

TECHNICAL SPECIFICATION	
Segment Length	24mm
Segment Height	10mm + 2mm
Segment Depth	3.5mm
Segment Type	Twisted Rooftop