

DIAMOND COREDRILLS

DIAQUIP K60

The K60 coredrill is the flagship product in the Diaquip K coredrill range. It is a universal specification with outstanding results across a wide variety of aggregates and exceptionally good results where there is a high level of reinforcement.

The positioned diamond segment composition along with the twisted rooftop design ensures a good combination of fast cutting and long life, particularly on **mid to high power motors**.

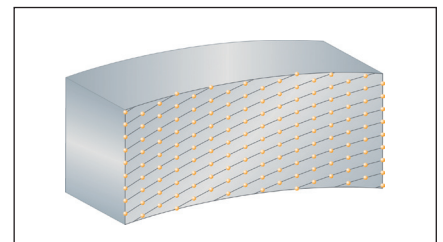
SPECIFICATION DETAILS



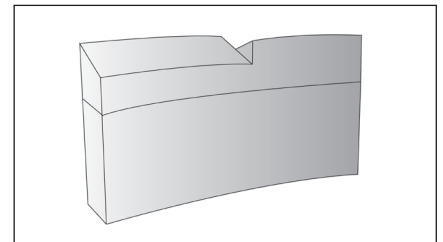
- Twisted rooftop design segment makes starting the cut faster and easier
- Ideal for Rig Mounted motors
- Fast cutting and long life in reinforced concrete and a wide range of aggregates



DIAMOND POSITIONED IN ALTERNATING LINES



DIAMOND FOLLOWS THE DIRECTION OF THE CUT



TWISTED ROOFTOP

TECHNICAL SPECIFICATION

Segment Length	24mm
Segment Height	10mm + 2mm
Segment Depth	3.5mm
Segment Type	Twisted Rooftop